



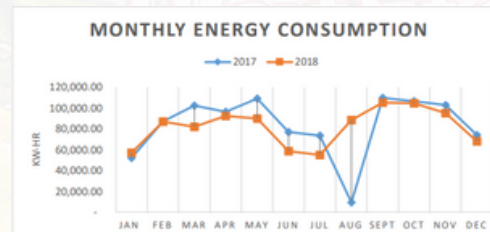
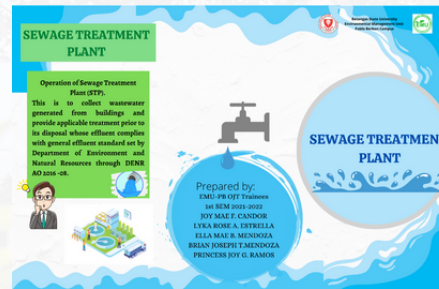
Highlight Indicators

- Memorandum Order No. 367-a from the Office of the University President is in regards to the implementation of green management practices in the university in relation to the requirements of relevant laws, rules and regulations particularly the compliance to the Green Building Code
- Implementation of Green Management Practices in the University relation to the requirements of relevant laws, rules and regulations
- BatStateU Environmental Management Unit (EMU) implements environmental programs for carbon management and reduction of carbon dioxide emissions

Output, Impact, Collaboration

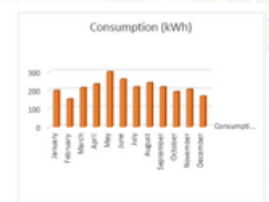


EMU is created to ensure that environmental sustainability is implemented in all Batangas State University campuses. It implements the policies set by the Department of Environmental and Natural Resources (DENR) as cited in the ECC, and is responsible for securing the environmental records, compliance certificates and licenses of the university.



University Electricity Consumption

Month	Consumption (kWh)
January	197.9
February	151.7
March	212.9
April	232.7
May	299
June	248.6
July	216.8
August	239.6
September	216.6
October	190.7
November	203.7
December	166.4
Total	2586.6/2587
Converted to gigaWatts	9.31176



University Solar Power Consumption

