

Republic of the Philippines
BATANGAS STATE UNIVERSITY
The National Engineering University

Rizal Avenue Ext., Batangas City, Batangas, Philippines 4200

Tel Nos.: (+63 43) 980-0385; 980-0387; 980-0392 to 94; 425-7158 to 62 loc. 1104/1105

E-mail Address: hrmo.central@g.batstate-u.edu.ph | Website Address: <http://www.batstate-u.edu.ph>

FACILITIES IN THE UNIVERSITY THAT PROVIDES ACCESS FOR PEOPLE WITH DISABILITIES

Republic Act No. 7277 or the Magna Carta for Disabled Person is an act providing for the rehabilitation, self-development and self-reliance of disabled person and their integration into the mainstream of society. Disabled persons are part of the Philippine society, thus the Senate shall give full support to the improvement of the total well-being of disabled persons and their integration into the mainstream of society.

Toward this end, the Batangas State University ensures that it promotes the inclusivity of its admission and recruitment policies to persons with disabilities (PWDs). It provides accessible facilities in the university to be able to accommodate them and support their integration into the mainstream of society.

Such commitment was embodied in the approved Policies and Procedures for Services for Students with Special Needs and Persons with Disabilities. Programs and activities were designed to offer equal opportunities for PWDs and learners with special needs. Further, the accommodation of PWDs in the recruitment process of the university were also reiterated through the memorandum of the University President reiterating the recruitment and reasonable accommodation.

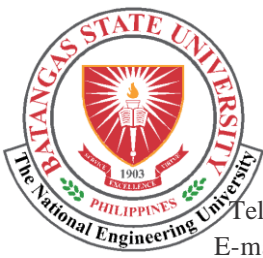
Part of the policy includes provision of express lanes in the different offices in the university. Facilities for Persons with Disabilities (PWDs) were also provided like wheelchairs, elevators, PWD washroom, ramp passageway & lift, reserved seats and parking space dedicated to them in the different areas of the University. The University continues to strive to include in its plans for development to provide facilities that can make the university more inclusive to all employees and students with special needs and disabilities.

The following shows the different facilities and services offered by the university to provide access to persons with disabilities (PWDs) in the University:

A. Ramp Passageway in the Entrance of Buildings



**Ramp Passageway in the entrance of the Student Services Center Building II
in BatStateU Pablo Borbon**



Republic of the Philippines
BATANGAS STATE UNIVERSITY
The National Engineering University

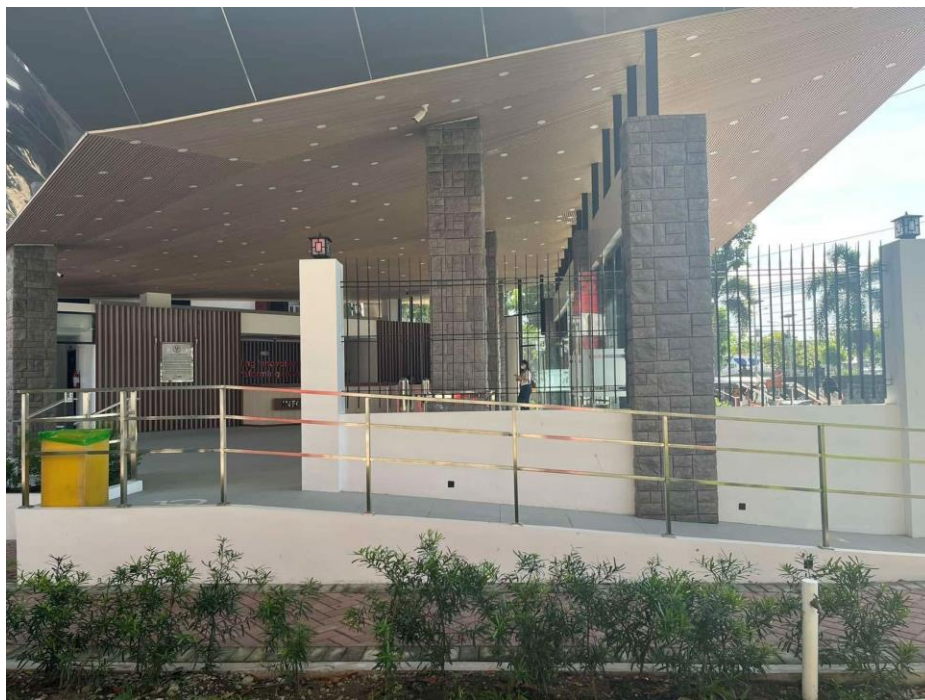
Rizal Avenue Ext., Batangas City, Batangas, Philippines 4200

Tel Nos.: (+63 43) 980-0385; 980-0387; 980-0392 to 94; 425-7158 to 62 loc. 1104/1105

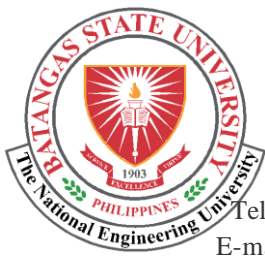
E-mail Address: hrmo.central@g.batstate-u.edu.ph | Website Address: <http://www.batstate-u.edu.ph>



Ramp Passageway to access the offices of the Registrar, Accounting and Cashiering in the Student Services Center Building II in BatStateU Pablo Borbon



Ramp Passageway located in the gateway of each campuses



Republic of the Philippines
BATANGAS STATE UNIVERSITY
The National Engineering University

Rizal Avenue Ext., Batangas City, Batangas, Philippines 4200

Tel Nos.: (+63 43) 980-0385; 980-0387; 980-0392 to 94; 425-7158 to 62 loc. 1104/1105

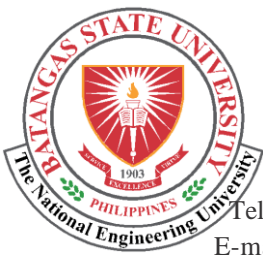
E-mail Address: hrmo.central@g.batstate-u.edu.ph | Website Address: <http://www.batstate-u.edu.ph>

Human Resource Management Office

B. Wheelchairs



Wheelchairs are available in the entrance of buildings



Republic of the Philippines
BATANGAS STATE UNIVERSITY
The National Engineering University

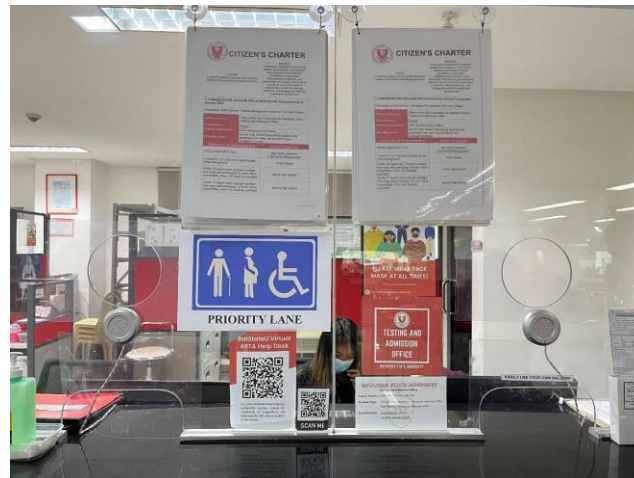
Rizal Avenue Ext., Batangas City, Batangas, Philippines 4200

Tel Nos.: (+63 43) 980-0385; 980-0387; 980-0392 to 94; 425-7158 to 62 loc. 1104/1105

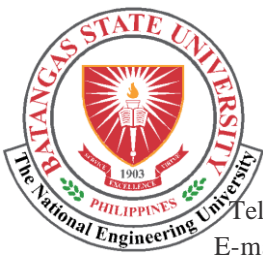
E-mail Address: hrmo.central@g.batstate-u.edu.ph | Website Address: <http://www.batstate-u.edu.ph>

Human Resource Management Office

C. Priority Lanes were established



Priority Lanes provided for Persons with Disabilities, Pregnant Women and Elderly in the different offices in the university



Republic of the Philippines
BATANGAS STATE UNIVERSITY
The National Engineering University

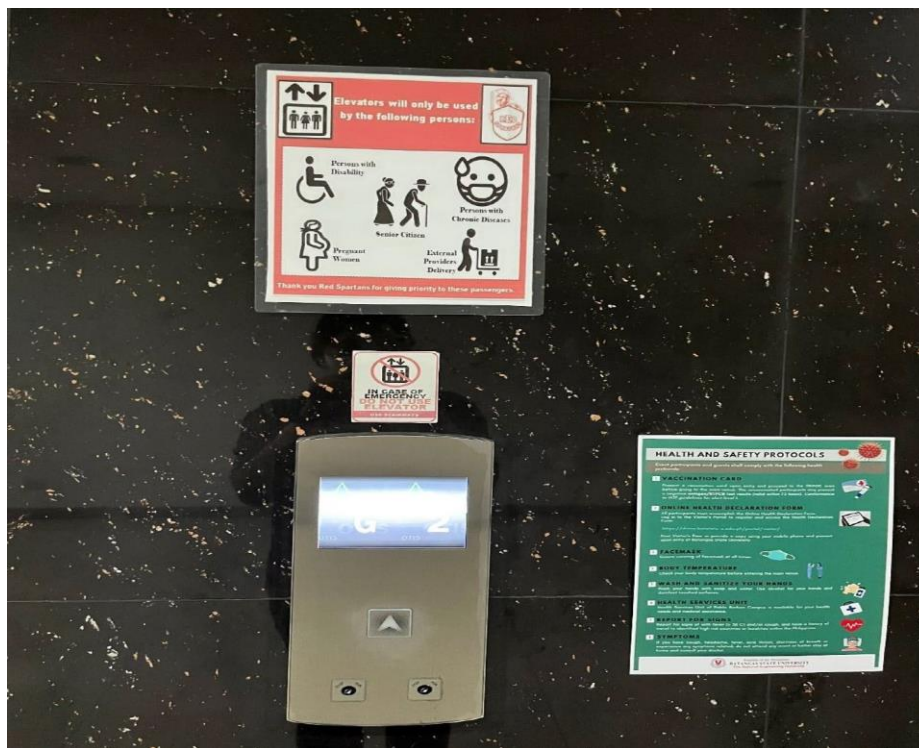
Rizal Avenue Ext., Batangas City, Batangas, Philippines 4200

Tel Nos.: (+63 43) 980-0385; 980-0387; 980-0392 to 94; 425-7158 to 62 loc. 1104/1105

E-mail Address: hrmo.central@g.batstate-u.edu.ph | Website Address: <http://www.batstate-u.edu.ph>

Human Resource Management Office

D. Elevators/Lifts were installed in the buildings



Elevators were installed in the buildings to be used by the persons with disabilities, pregnant women, elderly



Republic of the Philippines
BATANGAS STATE UNIVERSITY
The National Engineering University

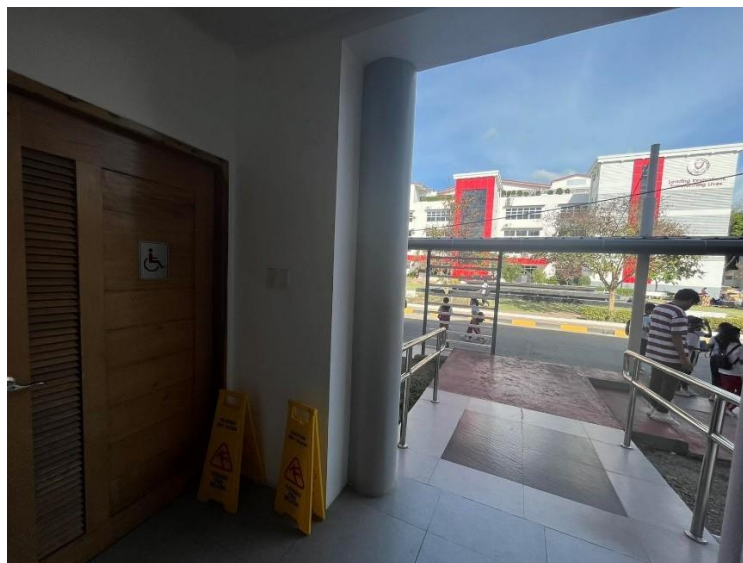
Rizal Avenue Ext., Batangas City, Batangas, Philippines 4200

Tel Nos.: (+63 43) 980-0385; 980-0387; 980-0392 to 94; 425-7158 to 62 loc. 1104/1105

E-mail Address: hrmo.central@g.batstate-u.edu.ph | Website Address: <http://www.batstate-u.edu.ph>

Human Resource Management Office

E. Restrooms for persons with disabilities were constructed



Restrooms constructed for persons with disabilities



Republic of the Philippines
BATANGAS STATE UNIVERSITY
The National Engineering University

Rizal Avenue Ext., Batangas City, Batangas, Philippines 4200

Tel Nos.: (+63 43) 980-0385; 980-0387; 980-0392 to 94; 425-7158 to 62 loc. 1104/1105

E-mail Address: hrmo.central@g.batstate-u.edu.ph | Website Address: http://www.batstate-u.edu.ph



BATANGAS STATE UNIVERSITY
Map identifying wheelchair ramps, disabled toilets
and parking access