



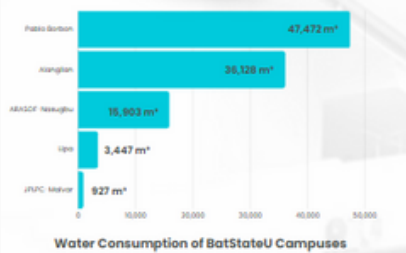
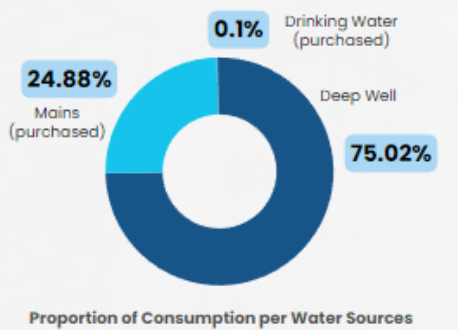
BATANGAS STATE UNIVERSITY

The National Engineering University

SDG 6: CLEAN WATER AND SANITATION

HIGHLIGHTS:

- The University has installed 22 drinking fountains and provided 185 water dispensers to provide safe drinking water to students and staff.
- Wastewater quality is monitored to comply with DENR standards.
- Water-efficient fixtures, such as dual-flush tanks for water closets, throttled water valves for faucets, angle valves for sinks and urinals, and water-efficient urinals, are utilized to conserve water and support sustainable practices.
- University fountains recycle water for irrigation, reducing campus water consumption.



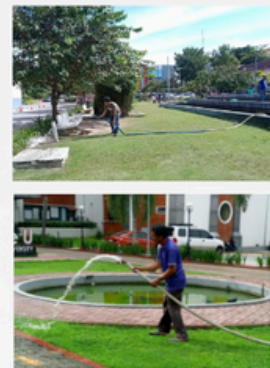
Access to free drinking water



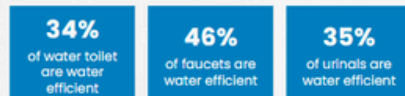
Water Reuse



Beyond aesthetics, university fountains recycle water for irrigation, reducing campus water consumption. With a combined capacity of 70 cubic meters, these fountains have helped recycle over 4,200 cubic meters of water annually. This not only minimizes the university's environmental impact but also creates a healthier, greener campus.



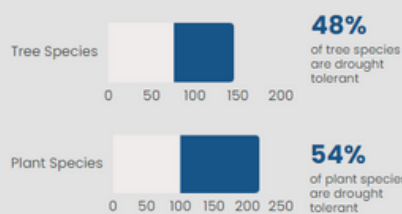
Water efficient fixtures



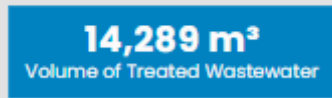
Water-efficient fixtures, such as dual-flush tanks for water closets, throttled water valves for faucets, angle valves for sinks and urinals, and water-efficient urinals, are utilized to conserve water and support sustainable practices.



Proportion of drought-resistant trees and plants in the campus



Wastewater Treatment



Source: Testing and Admission Office

Leading Innovations, Transforming Lives
Building the Nation